

POETRY SOCIETY OF TEXAS
Gulf Coast Poets

June 12, 2010

John Milkereit



John Milkereit grew up in Chicago. In 1991, he moved to Houston where he works at a local engineering firm. John started writing poetry in 2005; since then, he has been juried at the Austin International Poetry Festival, the Houston Poetry Festival. His new chapbook, *Paying Admissions*, was a Finalist of Note in the Pudding House Chapbook Competition Series in 2009 and his second chapbook, *Home & Away*, is forthcoming from Pudding House later this year. His work has appeared in various publications including Mutabilis Press' *The Weight of Addition*, *Swirl*, Houston Poetry Fest 2009, Austin International Poetry Festival's *Di-verse-City*. John read during the 1st Annual Gulf Coast Poetry Tour in Houston, Baton Rouge, and New Orleans in 2009. He lives in Houston, TX with his children--a dying ivy plant and a few fake fish.

John Milkereit's poems are "delightfully inventive, witty, and utterly serious. They grab you by the tie with one hand, while the other pours you a margarita--a blue luminescent margarita, salt glittering upon the rim." ~Randall Watson, Winner of the 2004 Blue Lynx Prize for Poetry.

Alan Birkelbach is a native of Texas—and has never lived anywhere else. He’s lived in Central Texas, along the coast, and currently in Plano. In his speaking engagements and personal travels he has been to practically every corner of the state.

He graduated from North Texas State University in 1978 with a B.A. in English. He has sold insurance, worked for the I.R.S., EDS, and, for the past twenty-two years, for Freddie Mac. He wrote his first poem when he was twelve, and, through all the job changes and moves, kept writing.

In 2005 Alan was named the 2005 Texas State Poet Laureate by the Texas Legislature. Alan was the 42nd Poet Laureate in the 160-year history of the state.

Alan currently has 5 books of poetry: *Bone Son*, *Weighed in the Balances*, and *No Boundaries, New and Selected Works*, and *Translating the Prairie: Plano, Texas in Words and Pictures*. A sixth book, from TCU Press, due in the fall of 2010.

Alan says, “I’ve been writing for over 35 years, more seriously in the last 20. If you can call it seriously. I’ve always written at my own pace on topics of my own choosing. Balancing poetry and a career can be a challenge—but the rewards are wonderful. Thematically, I tend to write about the search for direction. Much of my poetry, Texas-based or otherwise, tends to be about those people who desperately need a compass and don’t know even how to ask for it. They are looking for a pathway that will give them balance. They are waiting for a voice to tell them which way to go. I never worry about getting an idea. I write with the energy and enthusiasm of a teenager. It is always there. And I think it’s always there because even if the National Enquirer doesn’t present me with a delicious tidbit then all I have to do is step outside. Texas is there. It’s always there. I started working straight out of college but never in an academic environment. I’ve always held other, non-writing, jobs. My work tends to be very simple and direct (if occasionally a little eccentric.) Life is full of treasure. Everyone just needs to be reminded.”

**LIFETIME MEMBER
ALAN BIRKELBACH
2005 TEXAS STATE POET LAUREATE**



Early in the Morning, on the Road, near Franklin, Texas

Her skirt clings to her the way fog clings to a flower.
Her legs are curled up, her sleeping face soft like a saint.
Driving for hours a man thinks about how things are measured,
about how coffee always tastes better in small towns.

Her legs are curled up, her sleeping face soft like a saint.
St. Augustine said the eye is attracted to beautiful objects.
Coffee always tastes better in small towns;
the treasures of the destination make us take the trip.

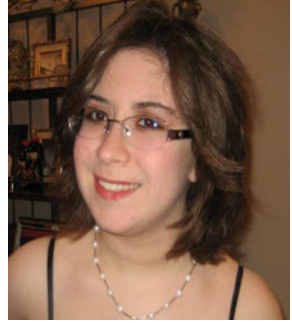
St. Augustine said the eye is attracted to beautiful objects.
The full moon makes her skin glow like a statue.
The treasures en route make us take the trip.
I start out thinking in terms of miles and hours

but the full moon makes her skin translucent like a statue.
Her breathing is as fragrant and sure as moonflowers
and I stop thinking in terms of miles and hours.
She'll wake up in a little while and touch me with her bare toe.

But for now, her breathing is as fragrant as moonflowers.
Driving for hours a man thinks about what makes things holy.
She'll wake up in a little while and bless me with her bare toe,
her skirt clinging to her the way fog caresses a flower.

UPCOMING GULF COAST POETS SPEAKER

July and August: Vacation
September: Franchesca Alamo
October 2: HPF Out of Bounds Reading
October 9th: No meeting
November 20: ACC Poetry Workshop
December 11: Annual GCP Dinner



Franchesca Alamo, a seventeen-year-old Houston native, is a high school senior at Duchesne Academy of the Sacred Heart. She wrote her first poem in second grade at age eight. She has been a member of Poets Northwest since 2004, and enjoys reading, writing, drawing, surfing the ‘net, and listening to many different genres of music; she has been published in multiple anthologies and has won several poetry awards since then. She was the featured poet at the First Fridays Poetry Reading Series in June of 2008 and was, around that time, published in her own personal chapbook titled “House of Wonder.” More recently, she was, along with her mother, a featured poet at the Poetry Society of Texas - Poets Northwest Chapter in August of 2009.

GULF COAST POETS PRESENTS A HOUSTON POETRY FEST OUT OF BOUNDS READING

The Gulf Coast Poets will host a Houston Poetry Fest Out of Bounds Reading, October 2nd, at the Bay Area Barnes and Noble in Webster, Texas. 10 poets will be featured (5 minute readings). Open Mic to follow (1-2 poem(s) per poet). More information to follow as details finalized. We will hold a drawing from the names of those who register to read to see who will be a featured reader. To register to read, write to Gulf Coast Poets <gulfcoastpoets@gmail.com> by September 1, 2010.

Invocation to Arachnia

You
Have shown me
The smile of a muse
Like Arachnia, you weave
A web of albino dreams and fears
A pulse runs through all
You spin
You spin my expectations
My desires
Oh, how you have caught me!
How you hang like a corpse
On that snow string
Harsh life you lead
But when it ends
Oh, Arachnia--beautiful Arachnia
I spin your name
In ink

© 2008 Franchesca Alamo

Poet's Note: This poem was nominated for the Manningham Awards in 2008.

Friendswood Public Library
presents

OPEN MIC



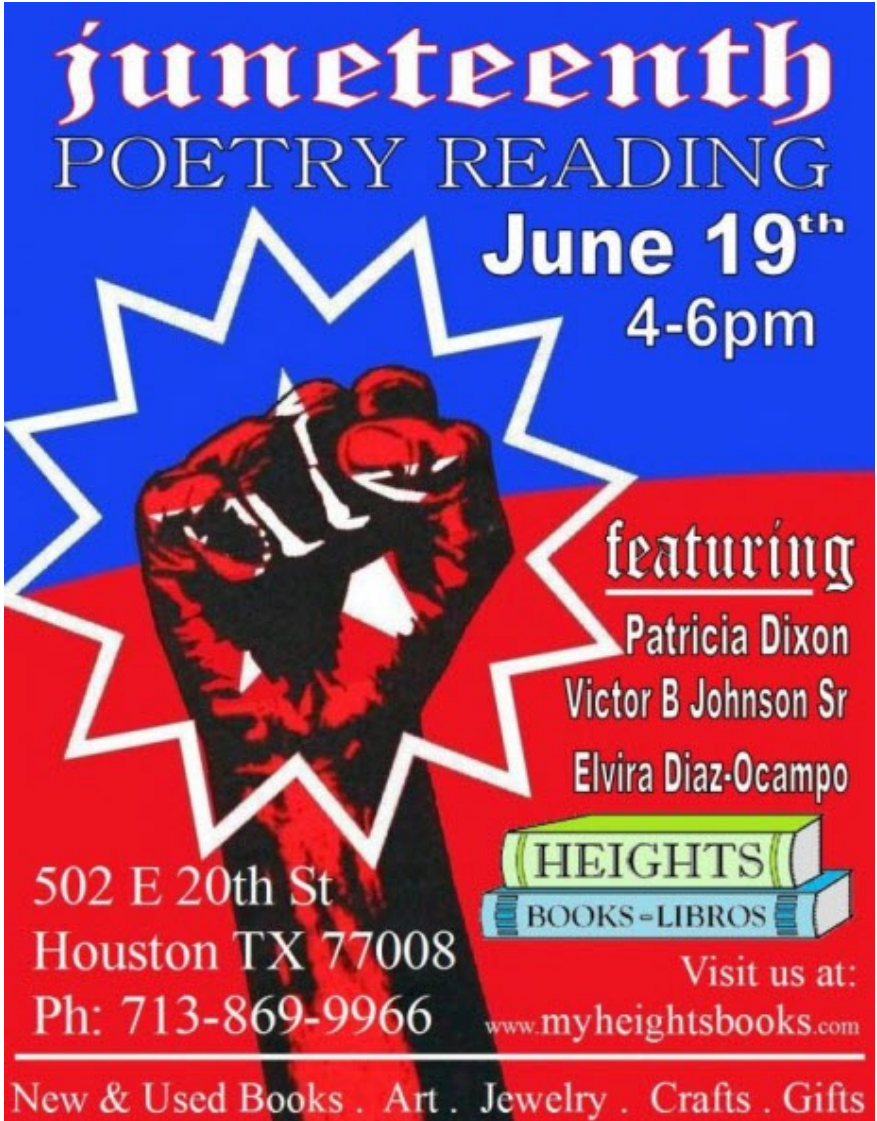
Poetry Night

With guest poet Donna Pauley, winner of 2008 Marrow and Bayousphere Poetry Awards, and Rebecca Hatcher Travis, author of *Picked Apart the Bones*, the First Book Award for Poetry from the Native Writers' Circle of the Americas. **Come read your own poems or share favorite poems by other authors.** Refreshments provided.

Wednesday, July 21st at 7pm

Friendswood Public Library/ 416 S. Friendswood Dr./ Friendswood,
TX 77546/ 281-482-7135

One of our Lifetime Members, **Patricia Dixon**, is featured at the monthly Heights Books-Libros Poetry Reading, June 19th, 2010, 4-6 pm. This bookstore offers a unique blending of new and old books, wonderful handmade jewelry, paintings, and photographs. They accept poetry books on consignment, so come on out and bring some of your books so your work will have a wider audience.



juneteenth
POETRY READING
June 19th
4-6pm

featuring
Patricia Dixon
Victor B Johnson Sr
Elvira Diaz-Ocampo

502 E 20th St
Houston TX 77008
Ph: 713-869-9966


Visit us at:
www.myheightsbooks.com

New & Used Books . Art . Jewelry . Crafts . Gifts

El Solitario

Among the candellia and ocotillo,
spiraling tantrum tossed terrain,
the scent of wild mountain cat on the wind
where the heart is a galloping horse
where the heart is a geode
the desert beating inside
this ancient caldera
aged womb of sand and mud
your lost children conceived of lava molten earthquake
buried among sun baked thorns and cinnabar veins,
eons of bleached bone weave strata and fossil,
the crushed skulls of the ancestors are pinned like butterflies.

Lonely one,
the stars gather over you,
some nights even the giant hand of God reaches down,
runs his fingers along the circles of your moonlit ridges,
dips into the Earth's marrow
traces the labyrinth

© 2010 Darla McBryde



Poet's Note: El Solitario is an ancient volcanic caldera 10 miles in diameter, with many twisted, curving rocky ridges, reaching out in concentric circles in the rugged isolated Big Bend State Ranch Park in far West Texas.

SPOTLIGHT ON DARLA MCBRYDE



Darla McBryde is a poet living in Conroe, Texas. Most recently her poems have appeared in the AIPF's DiVerseCity 2010 Anthology, The Salado Poets' Cat Tales, and The Austin Chronicle. Red River Review has accepted two of her poems for their August issue. When living in Austin, she was a board member of the AIPF, hosted the Third Tuesday poetry open mic at Chicago House, and was a frequent feature around town. In 1995, she was Executive Producer for a series of poetry readings filmed for Austin Access TV. She continues to be an avid supporter of poets and the spoken word, and is currently working on manuscripts for two collections of poetry.

gulfcoastmag.org

Gulf_Coast_Journal@mail.vresp.com

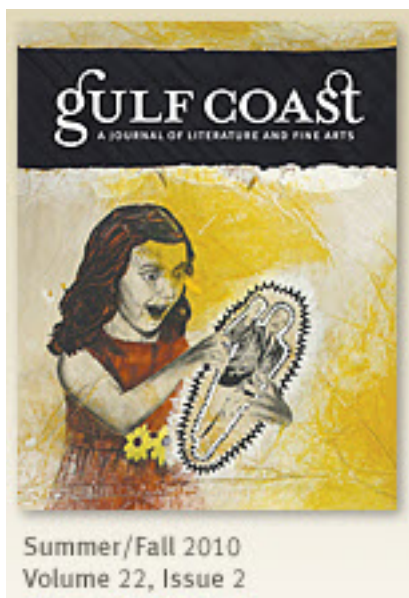
Gulf Coast Journal is happy to announce that the 2010 Barthelme Prize for short prose is now open for submissions!

No matter what you call it--flash fiction, prose poems, micro-essays--send us your work of 500 words or less. The winner will receive \$1,000 and will be published in the issue of *Gulf Coast* due out in Spring 2011, along with the two runners-up.

Entries are due August 31st, 2010 and each entrant will receive a year's subscription to *Gulf Coast*.

Congratulations to this year's winners! Look for their work in issue 23.1, due out this October.

The 2011 Gulf Coast Contests will open on October 1, 2010. Judges and deadlines will be posted at that time.



Gulf Coast: A Journal of
Literature and Fine Arts

Department of English
University of Houston
Houston, TX 77204-3013

editors@gulfcoastmag.org
713.743.3223

NOTE

**Gulf Coast Journal and
the Gulf Coast Poets
are not related
except in name.**

Other Announcements

Women in the Visual/Literary Arts (WIVLA): www.wivla.org

Bay Area Writers League Conference: www.bawl.org

Poetry Works Workshop offered a workshop on the “Creative Editor vs the Critical Editor” in June. Next meeting on the 2nd Sunday in July. <http://Sol-Magazine-Projects.org>

KUHF posted an extended version the recent interview of our member, Larry Thomas, on its site:

<http://kuhf.convio.net/programaudio/thefrontrow/2010/06/100602LarryThomasWeb.mp3>

**Gulf Coast Poets members who teach writing
are invited to attend
Texas Association of Creative Writing Teachers
Annual Conference in Fort Worth, Texas
September 23-25, 2010**

The 2010 TACWT conference, hosted by TCU, will be Thursday, September 23 through Saturday, September 25. The conference hotel will be the Hyatt Place in the Fort Worth Stockyards. All meetings and the reception will take place at this hotel. A block of rooms has been reserved for members. These are full suites that can accommodate two, or even three, individuals. The room rate is \$159.00 per night. Just call 1-800-993-4805 and give the code TCU D and you will get the discounted rate. Make a reservation later than August 26 for the discount. You can still make reserve after August 26, but you will not be given the discounted rate. We are looking forward to this conference and are now working on our banquet and guest speaker. Please contact me (Dave Kuhne) directly at 817-257-6537 or by email [Dave Kuhne <d.kuhne@tcu.edu>](mailto:d.kuhne@tcu.edu) if you have questions about hotel accommodations. See you in September! Dave Kuhne

2010 Houston Poetry Fest - October 8-10, 2010
Willow Street Pump Station
University of Houston – Downtown,
811 North San Jacinto
in downtown Houston, Texas

"Once a year, in October, Poets and lovers of poetry gather together at UH-Downtown to celebrate poetry and those who create it."

Guidelines: In order to be considered as an applicant for the "Juried Poet" category, submit the following items:

- (1) Four copies of no more than five poems, totaling no more than five typed pages, with their titles but without your name or other identifying marks on these pages (which will be assigned a poet number and sent to the judges for blind judging); retain copies, as these will not be returned, but shredded after judging is complete.
- (2) A cover letter, with name, address, phone numbers, e-mail address, and a list of the titles of your poems.
- (3) A brief biography, for the anthology in case your poems are chosen.
- (4) A stamped self-addressed #10 envelope, for notification of outcome.
- (5) A tax-deductible donation of \$15 to Houston Poetry Fest, a 501(c)(3) tax-exempt organization.

E-mail hpfest@aol.com for details.

MEMBER NEWS

Share news - send info one week before the next meeting. Include contact information.

Gulf Coast Poets <gulfcoastpoets@gmail.com>

UPCOMING MEMBER HOSTED READINGS

First Friday Poetry Reading Series, Inprint House, 1520 West Main, Houston, free, open to the public. Hosted by Lifetime GCP Member Robert Clark. Doors open at 8:30 p.m. Open mic follows featured poet. July 9 Andre de Korvin. August 6 Herman Sutter. Sept 10 Mike Guinn. Oct 8-10 Houston Poetry Fest 2010. Nov Mary Margaret Carlisle. Fmi contact Robert Clark at houstonfirstfri@aol.com

Bay Area Barnes & Noble Poetry Reading Series. 7:30 PM. 2nd Tuesdays. B&N is located in Webster on Bay Area Blvd at I-45. June [vacation], July - Daniel Garcia, August - Julieta Corpus. Contact Oscar Peña at pena554343@aol.com FMI.

Seabrook Coffee Oasis Poetry Reading Series, 1st Mondays. June 7, 2010, 7:00 PM, Seabrook Coffee Oasis, 4650 NASA Pkwy at Kirby. Open mic after feature. July - Sarah James "Lil Joka". August - Poetry Works Chapbook Group [Barbara Carle, Kay Cox, Laura Peña, Oscar Peña, Sharon Goodwin, Mary Ann Goodwin, Mary Carlisle]. Contact Adriana Babiak Vázquez and Luis Vázquez at ababiak_v@swbell.net

Words & Art

Reading Series

How to Participate

1. Visit the Rice Gallery at Rice University, in the lobby of Sewall hall.
2. Be inspired by the summer exhibit: Sometimes When I Dream I Fly by Andrea Dezsó



<http://ricegallery.org/new/exhibition/sometimes.html>

3. Write a poem, prose, dialogue, etc. (try to keep poems to less than one page, prose to less than 1/2 a page).
 4. If you want your work printed in a packet for the reading for everyone to take home, submit to: mswemple@gmail.com by Friday, July 23rd.
 5. Bring your work and your friends to the Words & Art Reading on Wednesday, July 28th, 7pm at the Rice Gallery.
-

Gallery Hours

Monday - Saturday, 9:00 am - 6:00 pm. The exhibit is free and open to the public. The doors to the Rice Gallery are closed during the summer, so the summer exhibits are specially made to be viewed through the front glass wall of the gallery.

Directions and Parking

Sewall Hall and Nearby Parking
<http://ricegallery.org/new/information/directions.html>

Rice Campus Map and Other Parking
<http://www.rice.edu/maps/maps.html>

A few interesting websites:

<http://pauldruffin.com/>

<http://alanbirkelbach.com/>

<http://poetryworkshops.org/>

<http://sol-magazine-projects.org/events/#GPR>

<http://www.larryfontenot.com/>

<http://www.bookconnectiononline.com>

<http://www.dosgatospress.org>

<http://www.poetryrevolt.com>

<http://www.daveparsonspetry.com>

<http://montgomery.lonestar.edu/>

<http://www.authorsandpublishers.org/>

<http://www.larrydthomas.com>

<http://www.mutabilispress.org/>

<http://www.witshouston.org/>

HOUSTON POETRY FEST INFO

Houston Poetry Fest
Attention: Submissions
P. O. Box 22595
Houston, Texas 77227-2595.

The judges will see only the pages of poetry and, scoring each set of poems as a whole, will select approximately 20 to 25 poets as "Juried Poets". These poets will receive:

- (1) five minutes onstage to read their own original poetry,
- (2) their names listed in the official printed program and on the website,
- (3) inclusion of one of their poems in the Houston Poetry Fest 2009 Anthology, and
- (4) one free copy of the Anthology. Additional copies of the Anthology may be purchased at the event or by mail.

The readings will be free and open to the public. You may invite as many guests as you wish. In addition, two or more open readings will be scheduled during the week at which you and your friends are welcome to read. Houston Poetry Fest is a great place to meet publishers, editors, and fellow poets. Bring business cards with your name and e-mail address.

Due date: June 30 E-mail hpfest@aol.com fmi.

<http://HoustonPoetryFest.info>
<http://HoustonPoetryFest.com>

HPF 2010 SUBMISSION GUIDELINES

Submit by June 30

Send

Four copies of no more than five poems, totaling no more than five typed pages, with titles, but without name or other identifying marks on these pages. Retain copies for your records. Anthology pages are 5½ by 8 ½ so longer lines may not fit.

A cover letter with name, address, phone numbers, e-mail address, and a list of the titles of your poems.

A brief biography for the anthology in case your poems are chosen.

A stamped self-addressed #10 envelope for notification.

A tax deductible donation of \$15.00

Send to:

Houston Poetry Fest
Attention: Submissions
P. O. Box 22595
Houston, Texas 77227-2595

Due date: June 30 E-mail hpfest@aol.com fmi.

<http://HoustonPoetryFest.info>

<http://HoustonPoetryFest.com>

MEMBERS OF THE POETRY SOCIETY OF TEXAS

PST DUES ARE DUE NOW!

Membership dues are \$25.00 a year for Active and Associate members and are payable in advance on an annual basis from July 1 to June 30. Members, unless specifically exempt, must have their dues current before submitting contest entries. To be listed in the current A Book of the Year dues must be received by November 30. The status of a member's dues is shown on the address label of The Bulletin. A brochure giving full requirements for membership may be obtained from the Membership Chairman.

Send dues, correspondence relating thereto, change of address and/or corrections to:

Lee Carroll, Membership Chairman
3909 Gable Ln., #611
Fort Worth, TX 76155
E-Mail: leecarroll.fwps@gmail.com

NOTE: The deadline for reservations for the Poetry Society of Texas Summer Conference at the discount room rate of \$79.00 + tax is Tuesday, June 15th.

NOTE: The Gulf Coast Poets is a chartered chapter of the Poetry Society of Texas. To belong to both, you must pay dues to both. GCP's dues are not be required until December.

The Word Factory--Monthly, 3rd Saturdays, 10 am-Noon. Meets monthly on the third Saturday, and welcomes the fresh diversity of alliance between the written and spoken word and other art forms. A supportive environment for writers and poets to work on their craft. Not a critique group. Contact: Lisa Grable at back2word@yahoo.com. Please call to confirm meeting dates. Location: The Arts Alliance Center at Clear Lake, 2000 NASA Parkway (corner of Upper Bay Road) Nassau Bay, Texas 77058. 281-335-7777.

Gulf Coast Poets

Treasurer Report for June 12, 2010 General Meeting Report Period: May 1 - May 31, 2010 -- with 2010 YTD totals

Cash Flow: May 1 - May 31, 2010

Total for year

Contests		0.00	0.00
Entry Fees	0.00		
Prizes	-0.00		
Sponsorships	0.00		
Dues		0.00	245.00
Lifetime (0)	0.00		
Founding (0)	0.00		
Chapter (0)	0.00		
Speaker Expense		-10.81	-157.06
Honorarium	-0.00		
Speaker Lunch	-10.81		
Donations		0.00	0.00
Interest		.24	1.94
Net Cash flow, May 1 - May 31		-10.57	89.88

Account Balances: May 1 - May 31, 2010

Total for year

Checking Ledger			
<i>Begin</i>		1929.55	1789.10
Transferred from Cash	0.00		
Checks written (0)	-0.00		
Debit card (1)	-10.81		
Dividend	.24		
Ending		1918.98	1918.98
Outstanding checks (2)	35.00	Bank chk bal=1953.98	
Cash (undeposited checks, cash)			
<i>Beginning</i>		0.00	40.00
Received	0.00		
Transferred to Checking	-0.00		
Ending		0.00	0.00
Savings (int. posted quarterly)			
<i>Beginning</i>		5.33	5.33
Ending		5.33	5.33
All accounts			
<i>Beginning</i> (5/1/10)		1934.88	1834.43
<i>Ending</i> (5/31/10)		1924.31	1924.31

Treasurer Reports will end on the last day of the month preceding the meeting.

Gulf Coast Poets-May 8, 2010 Minutes

Meeting began at 10:47am.

President Mary Margaret Carlisle welcomed members and guests to the meeting, then made these announcements:

- Archway Gallery reading 2nd Thursday of most months. Contact donnaperkins@att.net for more information.
- Heights Books-Libros featured Mary Carlisle and Susan Ellis in May.
- Heights Books-Libros features Pat Dixon reading June 19th for Juneteenth celebration.
- Montgomery County Literary Arts Festival featured a Walt Whitman Party on May 20th. John Gorman and Mary Carlisle were two of the featured readers at the Corner in Conroe.
- First Friday Houston Poetry Fest submissions are due by of June 30th. HFP will be Oct. 8, 9, 10th at UH downtown - Willow Street Pump Station.
- Mary Carlisle will be the featured reader at First Friday November 5. Rich Levy will read there in December.
 - Poetry Society of Texas dues are due by the end of June. The PST Summer Conference will be July 8, 9, 10th in Dallas.
- Oscar Peña, Kay Cox, Ann Fogelman, and Barbara Carle attended Alvin Community College workshop. Ann announced the Bay Area Writer's League Conference at UH-Clear Lake June 11, 12, 13.
- Oscar Peña hosted the Barnes and Noble Webster reading May 25 featuring Larry Thomas.
- Terry Miller hosts a poetry group in Fort Bend County. www.fortbendpoets.org fmi. He will have a signing in June for his new book.
- 11:13am our featured speaker, Penelope McFadin, read her poetry. She lives on a boat, and recommends gingersnaps for seasickness. Her poems were about nature, life, NASA, space, and neo-romance.

• Door prizes:

PoetrySpeaks (donated by Terry Miller) to Penelope McFadin.

Timeslice (donated by Sol Magazine) to Barbara Carle.

Weight of Addition (donated by Mary Carlisle) to Pat Dixon.

• Read-Around poems:

Pat Dixon: Unsung Melodies of Sisterhood

Terry Miller: It is Time

Barbara Carle: The Secret

Elizabeth Escalante: Come Tomorrow

Laura Peña: River God

Ann Fogelman: The Sea Calls to Me (read by Oscar Peña reads from the anthology dedicated to Ann Fogelman)

Oscar Peña: Iron and Steel

• If you are interested in being part of the Acree Carlisle Anthology Project (poems written about the paintings of the artist, Acree Carlisle) contact Sol.Editor@prodigy.net

• Meeting adjourned to Dimasi's Buffet for lunch.

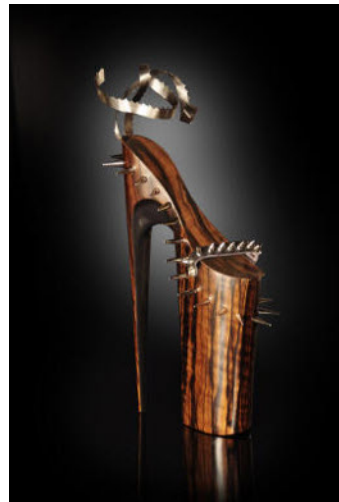
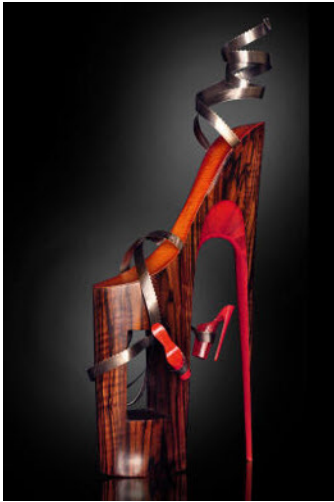
• Next meeting: Barnes & Noble, 10:30 am, September 11, 2010, featured Poet will be Franchesca Alamo, a member of the Poetry Society of Texas, Poets Northwest Chapter.

Acree Carlisle Anthology Project (poems written about the paintings of the artist, Acree Carlisle) FMI Sol.Editor@prodigy.net



**Write a poem
for the anthology!**





Omar Angel Perez Coffee Table Book

Artist Omar Angel Perez is designing a slick 100+pg. coffee table book of all his Stiletto high heel sculptures, and requests help in making the book even more special. If you have a favorite "high heel" story (quote, experience, poem, etc), he'd like to consider including it in the book. He plans to pair one story to each heel, with more than fifty high heels available.

He recommends: "Be creative; think about places you've been, special occasions, people you've met, the craziest heels you've worn, I'm open to just about anything having to do with high heels. You can write as little as one sentence or as much as you want. Your name will NOT be included in the book unless you give PERMISSION to use either only your first or your full name. Thanks so much for your input, and have fun."

Omar Perez <omar@omarangelperez.com>

2010 GULF COAST POETS OFFICERS

President:	Mary Margaret Carlisle
Vice President:	Adriana Babiak Vázquez
Recording Secretary:	Laura Peña
Treasurer:	Leo F. Waltz

FOUNDERS

LIFETIME MEMBER

HONORARY LIFETIME MEMBER

CHAPTER MEMBER

Ted O. Badger

Jan Bernstein

Alan Birkelbach 2010

Diana Dettling Buckley

Barbara Carle

*Mary Margaret Carlisle

*Robert Clark 2009

Diana Cordova

David Cowen

Kay Cox

Patricia Dixon

Edith Escalante

Susan Ellis

Lauren Perry English

Sybil Estess

Debi Fairchild

*Ann Fogelman

Dede Fox

Mary Ann Goodwin

Sharon Goodwin

*John Gorman 2007

Addie (Kathy) Hall

Jill Haugen

*David Hicks

Glynn Monroe Irby

Mary Kimmel

Philip Kimmel

Leslie Kriewaldt

*Peggy Z. Lynch 2006

Penelope McFadin

Terry J. Miller

Richard Peake

Laura Peña

Oscar Peña

Katherine Sanger

*Lulyne Streeter

Sandi Stromberg

Larry D. Thomas 2008

William Turner

Rebecca Hatcher Travis

Adriana Babiak Vázquez

Luis Vázquez

Leo Waltz

Founders are those who joined GCP before September 15, 2006. Some founders became Lifetime members, indicated by an * before their name.

